

# A PLACE TO IMAGINE.



**2023/24 PROSPECTUS**

**carmel  
college**

**IMAGINE YOUR FUTURE**



*JAGater*

Janet Gater, Principal

When you join Carmel College you are not only joining an outstanding college that is a centre of educational excellence, you are also joining a vibrant and caring community. We are a Catholic sixth form college for the whole community and, as such, excellence, support, challenge, care and opportunity are at the heart of everything we do.

From the moment you arrive you will be guided and supported by our dedicated academic and pastoral teams who, as well as being experts in their fields, are passionate about your growth and success as an individual.

Our aim is to ensure you have the opportunity to progress onto whatever future you dream of - whether that is university, a degree apprenticeship or an amazing employment opportunity.

This prospectus gives you a window into what your life at Carmel will be like; the opportunities, details on over 40 courses on offer, Carmel+ including the High Achievers+ and Enrichment Programmes as well as the academic and wider support and facilities. I hope that you enjoy exploring our prospectus and discovering how Carmel, and our college community, can inspire you to learn, believe and achieve.

# WELCOME

## WHAT YOU WILL FIND INSIDE...

- 04** COLLEGE LIFE
- 06** CAMPUS LIFE
- 08** IT'S YOUR TIME
- 10** GET INVOLVED
- 12** TRIPS AND VISITS
- 14** SUPPORTING YOU
- 16** STUDENT SERVICES
- 18** PREPARE FOR YOUR FUTURE
- 19** CARMEL+
- 20** HIGH ACHIEVERS+
- 22** RESULTS
- 24** JOIN US
- 25** WHAT OFSTED SAYS
- 26** MAKING YOUR CHOICE
- 28** LEVEL 3 COURSES
- 38** FOUNDATION LEARNING COURSES
- 39** DEGREE LEVEL COURSES

**OUR MISSION:**  
TO BE A CENTRE OF EDUCATIONAL EXCELLENCE, OPPORTUNITY, CHALLENGE AND SUPPORT WITHIN A CARING, CHRISTIAN ENVIRONMENT.

Carmel is a Catholic sixth form college welcoming students of all faiths and from all backgrounds.

We are committed to developing a community where each student is enabled to reach their potential feeling supported, safe and happy during their time here.



A CATHOLIC COLLEGE FOR THE COMMUNITY

“

**My Experience**

“My time at Carmel has been full of support. Staff are committed to ensuring every student can succeed. I have really enjoyed the environment that Carmel creates for students; it’s great to be around like-minded people who share common interests. Carmel also offers plenty of opportunities that can either improve your university application or just be something you enjoy, there is something for everyone!”

*Niamh Hurstfield*

WADE DEACON HIGH SCHOOL  
 BIOLOGY, CHEMISTRY, MATHS (A\* A\* A)  
 NOW STUDYING MEDICINE AT  
 QUEEN’S UNIVERSITY, BELFAST



Inclusive  
 +  
 diverse

“A CULTURE OF EQUALITY & DIVERSITY ACROSS THE COLLEGE. STUDENTS FLOURISH IN THIS INCLUSIVE ENVIRONMENT AS CONFIDENT AND MATURE INDIVIDUALS.”

OFSTED 2019



**1:1 SUPPORT**



**MEETING UP IN THE CHAPLAINCY**



**CATCHING UP**

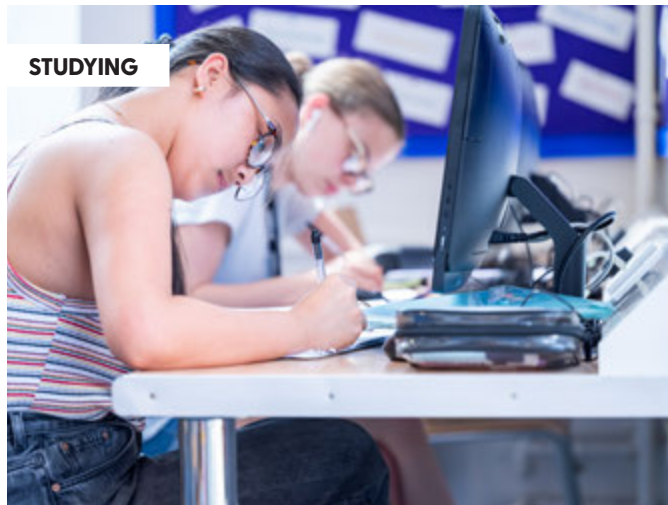


**PEER STUDY**



**PLAYING SPORT**

# COLLEGE LIFE



**STUDYING**



**FUNDRAISING**

WHAT OUR STUDENTS SAY



You can look forward to your days at Carmel College being full from 9:00am until 4:00pm (with morning and lunchtime breaks).

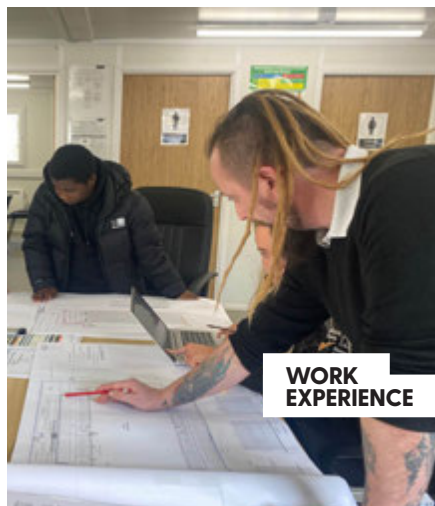
It isn't only your chosen subjects that will fill your day, you'll have time to study independently (approx 5hrs per subject per week) - great preparation to becoming more independent, not only for university, but also for your future employment.

It's as important to us as it is to you that as well as achieving great academic success, you develop your personal skills and build confidence while you're a student at Carmel.

We want you to feel prepared for your next steps and will support you in this by providing a wealth of additional activities and experiences alongside your studies. We offer an extensive Enrichment Programme including Super Curricular activities linked to academic courses as well as sports, Student Council, fundraising, Duke of Edinburgh, Journalism, Music Club and many more. You can also take part in work experience placements, social, moral & cultural education sessions and additional support and study skills sessions.



**CAREERS ADVICE**



**WORK EXPERIENCE**



**SUPPORT**

# PLACES & SPACES

## OPEN EVENTS

Come along and see our fantastic facilities.

WED 11 OCT 2023 5:00-7:30pm

THURS 9 NOV 2023 5:00-7:30pm

TUES 12 MAR 2024 5:00-7:30pm

Students perform best when they are in an environment where they feel safe, comfortable and productive and the £23M investment in Carmel has created an inspiring place of learning.

The campus provides you with outstanding technology-rich facilities for sciences, IT, modern languages, humanities, performance, sport and foundation learning.

Our virtual learning environment gives you access to everything you need from your devices; from subject resources and submitting work online to college timetables and activities. You will have access to Office 365 with your personal college email address and cloud storage which can be installed on up to 5 devices at home for **FREE**.

FACILITIES





---

“A VIBRANT AND MODERN CAMPUS WITH  
EXCELLENT LEARNING FACILITIES.”

---

OFSTED 2019

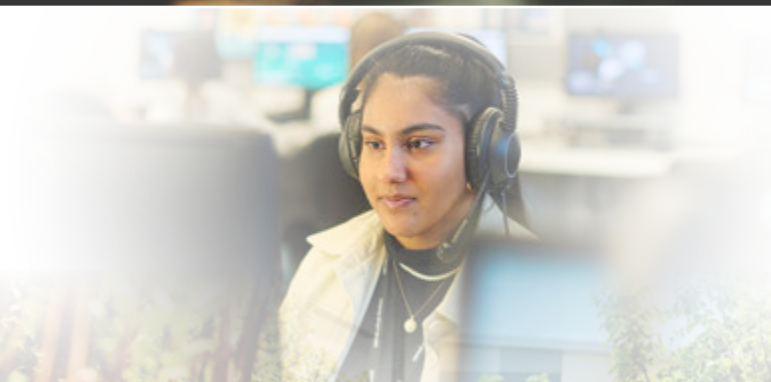




# IT'S YOUR TIME



**Spend it indoors, outdoors, living, learning, working, relaxing, creating and performing.**



- **WI-FI ENABLED CAMPUS**  
with superfast Broadband, 1200 PCs, Office 365 and remote access
- **PERFORMANCE THEATRE**  
with 200 seats, stage management equipment and light/sound gallery
- **STUDIO**  
with semi-sprung floor, rehearsal spaces and changing facilities
- **DIGITAL LANGUAGE LAB**  
with the latest technology
- **FULLY EQUIPPED FOUNDATION LEARNING FLAT**  
with a kitchen, lounge area, sensory garden and greenhouse







- **FLOODLIT 3G PITCHES**  
as well as grass rugby & football pitches
- **SPORTS HALL**  
for netball, basketball, table tennis, badminton etc
- **FITNESS STUDIO**  
with cardio/resistance machines and free weights
- **7 ART & DESIGN STUDIOS**  
for Fine Art, Graphic Design, Photography, Fashion & Textile Design, 3D Design and UAL Creative Practice
- **CHAPLAINCY**  
a quiet space for prayer, reflection and spiritual growth
- **LIBRARY & STUDY CENTRE**  
2,000+ resources plus additional online resources including links with The University of Liverpool
- **RESTAURANT AND COFFEE BAR**  
Serving **COSTA** coffee, breakfast, hot & cold lunches and snacks



Be sociable.



# GET INVOLVED

**You will be encouraged to enjoy everything that Carmel has to offer that extends beyond just passing your exams.**

If you have ever wanted to try something new, then Carmel's Enrichment Programme of over 45 activities has something for everyone. You can make new friends whilst developing new skills and knowledge for your future. Our varied programme provides opportunities to stretch and challenge your academic ability, develop leadership skills and compete with others in a wide range of sporting activities.

Academic Enrichment is a Super Curricular programme which supports you to reach your academic and progression goals. More information about these activities is included on pages 19 and 20.

Our physical and mental well-being activities enable students to join clubs such as chess, music, sign language, art, singing and many more. We also offer the Duke of Edinburgh's Award and sports activities including our football, rugby, basketball and netball teams.





**Want to change the world for the better?** Then Kath and the college Chaplaincy will make you feel right at home. Chaplaincy enrichment groups enable you to BE the change you want to see! Whatever your passions; striving for climate action, standing in solidarity with refugees or realising a better, fairer world, you can make a difference through the CAFOD Young Leaders, Youth SVP & Social Justice Groups.

It isn't just the wider world that needs your support. The college welcomes students as Ambassadors who are part of a select group who represent the college at events throughout the year, giving a student voice and sharing your lived experience of life at Carmel.

Every spring we also elect members of the Student Council to represent all students at Carmel. They take up any important issues with the Senior Leadership Team on behalf of students and initiate a number of campaigns and fundraising activities.



**However you decide to spend your time, we are here to help you make new friends.**

Bringing your academic study to life.

# TRIPS & VISITS



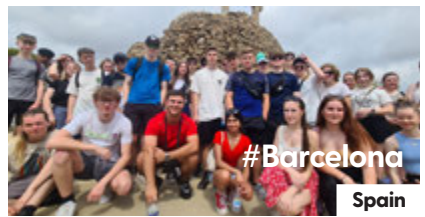
#Rome  
Italy



#SimulationCentre  
Edge Hill University



#LUSH  
Liverpool



#Barcelona  
Spain



#RNCM Theatre  
Manchester



#DukeofEdinburgh  
Yorkshire Dales



#EvertonFC

Finch Farm



#SculpturePark

Yorkshire



#NetflixHQ

London



#LondonEye

London



#HarryPotterWorld

London



#Nice

France



#SandscaleHaws

Cumbria



#TownHall

Liverpool



#Parliament

London

# SUPPORTING YOU



**You are supported and encouraged to be the best version of yourself, to reach your goals and fulfill your potential.**

**You can turn to our tutors for help and advice at any time. They support you in all aspects of college life.**

## **ADVICE AND GUIDANCE ON ACADEMIC PROGRESS AND PERSONAL WELLBEING**

## **ONE-TO-ONE SUPPORT AND PROGRESS REVIEWS**

## **TUTORIALS – EMPLOYABILITY SKILLS, STUDY SKILLS, CAREER PROGRESSION AND MORE!**

## **HELP WITH UCAS, JOB AND APPRENTICESHIP APPLICATIONS**

## **DELIVERY OF THE 10:10 ETHICS AND VALUES**

## **ADDITIONAL LEARNING SUPPORT**

Beyond teaching, you will have access to a wealth of support through your Personal Achievement Tutor and our Additional Learning Support Team.

The Personal Achievement Tutors (PATs) provide advice and guidance on your academic progress and help you with your physical and mental well-being.

They hold regular one-to-one support and progress reviews with you and consultation evenings with your parents.

They will inspire you to fulfill your potential by encouraging you to participate in the many enrichment and 10:10 Ethics and Values sessions. These sessions will stretch and challenge you, allowing you to grow in confidence and develop as a person.

Our Additional Support Tutors are there for you if you ever feel like you need support with revision strategies, stress management, writing techniques, report and presentation writing or just proof reading coursework.

The Additional Learning Support team are experienced in supporting students who have a broad range of learning disabilities and difficulties.

Whether your additional needs are emotional, physical, cognitive or developmental, the team can help to identify what support is available to make your learning experience at Carmel as accessible and independent as possible.

You can speak in confidence to Clare Dawson, our Head of Additional Support about your individual needs, starting your course or any other aspect of college life.

ADDITIONAL  
LEARNING  
SUPPORT



THE LOCAL OFFER  
/ HIGH NEEDS  
SUPPORT



“

**My Experience**

“Carmel is a fantastic place, the teachers are approachable and helpful, and always willing to sacrifice their spare time to help. I’ve had help through the Talented Athlete Scholarship Scheme as well as support from my PAT and subject tutors. It’s been a big part of my development as a young adult. I’ve definitely received the help and opportunities I’ve needed to progress to the next steps of my life.”

*Jonny Vaughan*

RAINFORD HIGH SCHOOL  
ENGLISH LANGUAGE, HISTORY, PSYCHOLOGY (B B B)  
NOW STUDYING LAW AT EDGE HILL UNIVERSITY

welcoming  
+  
supportive



“CAREERS ADVISORS, PERSONAL ACHIEVEMENT TUTORS AND TEACHERS WORK CLOSELY WITH INDIVIDUAL STUDENTS TO SUPPORT THEM TO MAKE THE RIGHT DECISIONS ABOUT THEIR NEXT STEPS.”

OFSTED 2019

# STUDENT SERVICES

**The services we provide to you extend beyond learning, emotional and physical support; there is also a range of financial and accessibility support.**

We don't want any barriers getting in the way of your potential. If you are experiencing financial difficulties linked to your learning, are in care or a care leaver, are in receipt of financial allowances then there are a range of bursaries available to help you.

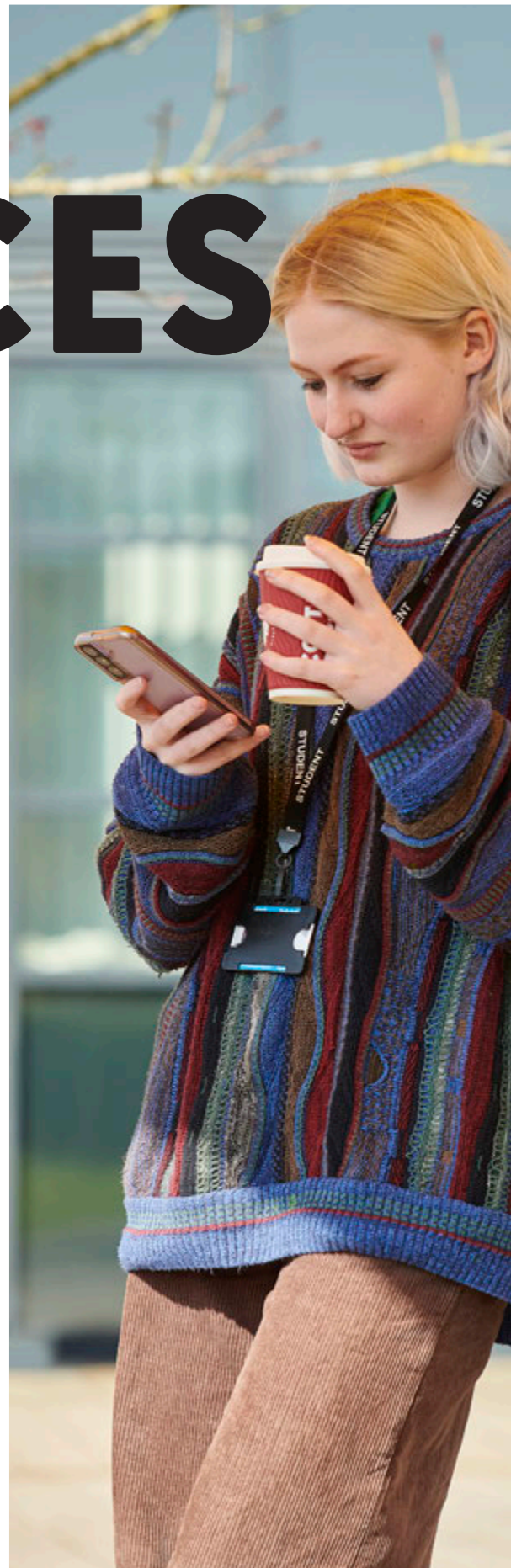
Free college meals are available to students who meet the financial criteria and if you have a child, there is support available through Care to Learn. Other general financial support is also available (scan the QR code).

As well as support, there are also perks! Carmel students benefit from reduced gym memberships at local leisure centres and a TOTUM Extra card for nationwide discounts and promotions on travel, fashion, music & technology.

Travelling here couldn't be easier, even if you don't live on our doorstep. The college is on main public bus routes from the Knowsley/Liverpool area and the Golborne/Leigh area. We have a FREE contracted bus covering Widnes and a FREE service from Westbrook, Warrington as well as other paid services around the Warrington area. Visit our website for further details.

Car Parking is FREE on the neighbouring West Park Rugby Club and there are also areas for moped and bicycle parking on campus.

You can pick up more information at our Open Events or view the latest updates on our website.







“

### My Experience

“I have really enjoyed my time at Carmel, and the support offered is amazing. From tutorials and drop-in sessions to simply messaging teachers on Teams, I have always felt there is someone to help you with anything you're struggling with. I have found the support makes my courses very manageable and my end goal achievable. The wide range of Enrichment opportunities means there is something to fit everyone's interests, making Carmel a very diverse and inclusive college.”

*Mia Follis*

RAINHILL HIGH SCHOOL  
MATHS, FURTHER MATHS, ECONOMICS  
AND BTEC PERFORMING ARTS (A\* A\* A, MERIT)  
NOW STUDYING MATHEMATICS  
AT DURHAM UNIVERSITY



# PREPARE FOR YOUR FUTURE



**Getting you ready for your future is part of the care and support you'll receive during your time at Carmel.**

**You will be provided with all the support you need from our dedicated and experienced staff.**

Your future may include university, an apprenticeship or employment. Our Personal Achievement Tutor Programme and Careers Service will give you the guidance and help you need with your applications.

During your studies, you may want to volunteer or take part in activities to help you stand out from the crowd. However you want to prepare for your next steps, we're here to support you.

If you want to gain real life, meaningful experience in the workplace, and skills that employers and universities value, you will benefit from speaking to our Work Experience Co-ordinator. They have links with over 600 organisations, and will support you in finding a rewarding placement that blends well with your studies and career path.

The information, advice and guidance that you receive from our professionally qualified Careers Advisors will help you make informed and effective decisions about your future. Help is available throughout the year when you need it.

# CARMEL+

**Considering a career in medicine, dentistry, veterinary practice, law, architecture, engineering or science?**

**As a Carmel student, you will have the opportunity to enhance your learning and develop employability skills that are sought after by universities and employers.**

Our MDV Programme, STEM Society, Law Society, Future Architects and Future Engineers Programmes are just some of the academic enrichment activities that will provide you with tools, resources and opportunities to develop knowledge and gain practical experience in your chosen area.

Taking part in these Super Curricular Enrichment activities will help you develop your personal statement and applications for university, an apprenticeship or employment. There'll be opportunities to enhance your research, presentation and questioning skills that will be beneficial to succeed in the future.

Active learning experiences such as the Law Mock Trials and debating competitions are a great way to build confidence and team working skills. Students can also get hands

on with activities and projects that contextualise their studies. For example, our Future Engineers Programme gives students the opportunity to take part in STEM masterclasses and the Physics Olympics competition as well as trips and visits to CERN in Geneva, Daresbury Labs and the STEM Big Bang Fair.

Talented athletes gain access to the Talented Athlete Scholarship Scheme (TASS) to participate in workshops and receive mentoring from professional and elite performers.



**“DEDICATED WORK EXPERIENCE STAFF WORK WITH STUDENTS TO DEVELOP BESPOKE PLACEMENTS AND ACTIVITIES THAT MATCH STUDENTS’ FUTURE CAREER GOALS & AMBITIONS.”**

**OFSTED 2019**

MDV Programme	STEM Society
Our MDV Programme is designed for students who are aiming to apply for Medicine, Dentistry or Veterinary Science. You will develop critical thinking skills and be supported through visiting speakers and practice interview sessions.	Take part in activities and explore the links between the sciences, maths and engineering. You will develop research, presentation and questioning skills to help you success in STEM careers.
Future Architects	Debating Society
Develop your knowledge and understanding of the built environment as well as learning new skills to prepare you for future industry practice. You will meet practising Architects and gain careers and portfolio advice for future progression.	A student-led group that will develop your public speaking skills, improve your research skills and develop your ability to communicate convincing arguments. You will take part in competitions including the English Speaking Union's Schools' Mace, the European Youth Parliament and the Athenaeum debates.



# HIGH ACHIEVERS+



**If you are expecting to receive the highest grades in your GCSEs and are interested in applying to the most competitive universities, then the High Achievers+ Programme at Carmel is for you.**

If you have an average GCSE point score of 7.0 you will be automatically enrolled onto the HA+ Programme. Students can also join the Programme by being nominated as gifted and talented by a subject teacher.

From day one HA+ students at Carmel benefit from:

- A HA+ Tutor Group with a supportive HA+ peer group
- A HA+ Personal Achievement Tutor for guidance and support
- Support from specialist HA+ Academic and Pastoral teams to prepare for progression
- Access to the outstanding HA+ Super Curriculum

Our HA+ students are supported to progress competitively, each receiving outstanding careers advice. You will complete supported research in the Autumn term of Lower Sixth and select a progression pathway to ensure you receive specific progression advice and Super Curricular opportunities.

Our HA+ Super Curriculum enables our students to become independent learners. Designed by our academic staff, it includes an internal lecture programme and HA+ Enrichment including the Chemistry Society, the Maths Society, the MDV Programme, Future Architects and many more. External activities include the University of Cambridge HE+ Programme, The Brilliant Club: Scholars Programme and Villiers Park Leadership Challenge.

The HA+ Programme includes progression support such as visits, lectures and mentorship from the University of Cambridge, University of Oxford, University of Liverpool, UAL and many more competitive HE progression destinations. Plus support for students applying to apprenticeships, employment, and international study.

The High Achievers+ Programme will support you, challenge you and it will inspire you to be the best you can be academically and to succeed in your chosen path beyond Carmel.

## **Extended Project Qualification (EPQ)**

This sought-after qualification is offered to all High Achievers and will demonstrate your subject enthusiasm and can even lower your UCAS points offer.



FIND OUT MORE

Enrichment Activities



Extended Project Qualification



High Achievers+ Programme



“

### My Experience

“My time at Carmel College has been really enjoyable, thanks to the wealth of support and opportunity available here. I would not be where I am now without it!

The support offered by the High Achievers+ Programme was invaluable, especially towards making a competitive university application, which made the whole process so much more manageable.”

*Zilin Wu*

CARDINAL NEWMAN CATHOLIC HIGH SCHOOL  
ENGLISH LITERATURE, HISTORY, PSYCHOLOGY (A\* A\* A\*)  
NOW STUDYING LAW AT  
CHRIST'S COLLEGE, CAMBRIDGE

*inspiring  
+  
challenging*



“CAREERS ADVISORS, PERSONAL ACHIEVEMENT TUTORS AND TEACHERS WORK CLOSELY WITH INDIVIDUAL STUDENTS TO SUPPORT THEM TO MAKE THE RIGHT DECISIONS ABOUT THEIR NEXT STEPS.”

OFSTED 2019

# ONE OF THE TOP FIVE Sixth Form Colleges in the country\*

## PASS RATES 2023

**99.3%**

LEVEL 3 PASS RATE

**62%**

TOP GRADES  
(A\*-B/DIST\*-DIST)

**85.2%**

HIGH GRADES  
(A\*-C/DIST\*-MERIT)

## OUTSTANDING PROGRESS

Just as important as looking at league tables, A Level grades and pass rates, are the 'value added' scores produced by the A Level Performance System (ALPS).

**ALPS measures the distance travelled by students from their GCSE grades at school to their final A Level grades.** These 'value added' scores are the best way to compare student achievements in schools and colleges.

Over a number of years Carmel has sustained outstanding 'value added' scores, showing that whatever a student's GCSE results, they will make fantastic progress at Carmel - **a great start to a successful future!**



\*The Times  
% A\*/A\*-B Grades  
(18/08/23)



“The support at Carmel is exceptional. There are so many talented and passionate individuals, which has a really positive impact.”



*Andrea Beesley*

RAINHILL HIGH SCHOOL  
FINE ART, ENGLISH LITERATURE, SPANISH (A\* A\* A)  
ENGLISH, KING'S COLLEGE LONDON

“I had an amazing experience during my time at Carmel, I made amazing friendships and received lots of support in all my subjects.”



*Brennan Hamilton*

DE LA SALLE SCHOOL  
BIOLOGY, CHEMISTRY, SPANISH (AAA)  
VETERINARY MEDICINE, UNIVERSITY OF NOTTINGHAM

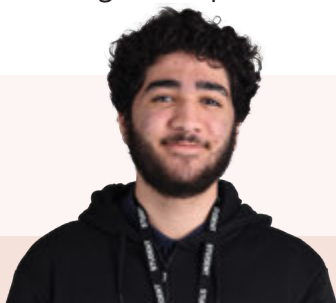
“I’ve received so much support at Carmel from my tutors as well as the Additional Learning Support team in college. I had a fantastic time.”



*Joe Stead*

ST GREGORY'S CATHOLIC HIGH SCHOOL  
HISTORY, POLITICS, LAW (A\* A\* A\*)  
LAW, GONVILLE AND CAIUS COLLEGE, CAMBRIDGE

“My time at Carmel has been wonderful. The amount of support available is outstanding and the quality of teaching is exceptional.”



*Omar Zebibo*

BYRCHALL HIGH SCHOOL  
MATHS, FURTHER MATHS, PHYSICS (A\* AA)  
MECHANICAL ENGINEERING, UNIVERSITY OF LEEDS

“The tutorials offered at Carmel have really helped to support me. I attended revision clubs, lunch sessions and High Achievers+ activities.”



*Isabelle Duck*

WADE DEACON HIGH SCHOOL  
MATHS, PSYCHOLOGY, BTEC IT (AB DIST\*)  
PSYCHOLOGY, UNIVERSITY OF YORK

“Studying at Carmel has been an amazing experience. The staff are very supportive and helped me to build independent learning skills.”



*Rozhin Cheraghian*

BROUGHTON HALL HIGH SCHOOL  
ENGLISH LANGUAGE, MATHS, SPANISH (A\* A\* A)  
MANAGEMENT, LONDON SCHOOL OF ECONOMICS AND POLITICAL SCIENCE

## The majority of Carmel's students progress to university, with many taking up places at competitive universities.

The future for an increasing number of students doesn't involve university and they are successful in gaining apprenticeships or employment with top companies in exciting industries.

**5**

students gained places to study at Oxbridge in 2023.

**98%**

progression to university, further education, jobs or apprenticeships.  
(Known destinations)

**12**

students gained places at university to study Medicine, Dentistry and Veterinary Science degrees in 2023.

# JOIN US

You'll be joining students from all faiths and backgrounds at Carmel, becoming part of our diverse and thriving college community.

## OPEN EVENTS

Come along and see our fantastic facilities.

WED 11 OCT 2023 5:00-7:30pm

THURS 9 NOV 2023 5:00-7:30pm

TUES 12 MAR 2024 5:00-7:30pm

## Here are your 6 steps to joining us

### 1 Do your research

You want to make sure that you have the right information to help you make choices that are best for you. Our prospectus is a good place to find out more about life at Carmel and the courses available. **You are invited to attend one of our Open Events to see the college and meet our staff**, and if your school has a link with Carmel, we may also be visiting your school.

### 2 Make your application

Go to [www.carmel.ac.uk](http://www.carmel.ac.uk) by **31st January 2024** to make your application and you will receive an automated notice that we have received your application.

### 3 Have your guidance interview

You will have the opportunity to discuss your career aspirations, predicted GCSE results, choice of subjects and the entry requirements at an informal interview. These take place between **October 2023 and March 2024**.

### 4 Spend a day at Carmel

In May you will receive an email invitation to come to a **Taster Day at Carmel in July** where you will have the opportunity to try out your chosen subjects.

### 5 Enrol on your courses

If you meet the entry requirements, you will enrol at Carmel College in **August 2024** on GCSE Results Day. The time of your enrolment will be sent to you in June.

### 6 Start your life at Carmel

Congratulations, **you are now a Carmel College student!** In September, you will begin your induction programme to help you settle into college life. We look forward to seeing you!

Apply online by Wednesday 31st Jan 2024





# YOU DON'T HAVE TO TAKE OUR WORD FOR IT...

Ofsted inspectors were impressed with the extremely high standards of teaching and learning.

## Effectiveness of leadership & management

### OUTSTANDING

Students excel and strive to achieve the very high standards set in a culture of great expectations and uncompromising ambition.

Throughout the year, we hold events that help students prioritise their physical and mental health. We encourage them to make the most of their potential and take a fulfilling role in all aspects of life.

## Quality of teaching, learning & assessment

### OUTSTANDING

We have high expectations and standards, matched by our skilled and enthusiastic teachers who inspire and motivate their students.

## Personal Development, behaviour & welfare

### OUTSTANDING

There is a culture of compassion where students are encouraged to express their own ideas through an extensive range of additional activities.

Here students' self-confidence and self-awareness are built through purposeful and relevant learning experiences.

## Outcomes for learners

### OUTSTANDING

Students make excellent progression to university, further education, employment and apprenticeships. Students feel well prepared for life after Carmel and outcomes are high.

## Safeguarding

### OUTSTANDING

Students make excellent progress and feel safe knowing who to talk to and how to raise concerns about themselves or others. Keeping students safe is a high priority for our governors, managers and staff at all levels. Effective and well-developed policies are followed by all staff.

If students have any concerns about their wellbeing whilst studying at Carmel, their Personal Achievement Tutor (PAT) is there to help them.

## Study Programme

### OUTSTANDING

Teachers plan and provide highly effective and engaging lessons. Teachers use expert questioning to stimulate a deeper understanding of the subject.

## Learners with high needs

### GOOD

There are well planned and well managed individual transition arrangements to ensure that students settle very quickly into college life. Students participate in a rich and extensive programme, including promoting well-being and developing personal welfare knowledge.



# MAKING YOUR CHOICE

**You may know the career path you want to take and what courses will help you to get there and if you do, that's great but make sure you still do your research.**

Alongside your predicted grades, entry requirements for the course you want to study are a good starting point in informing your decision, but they are not the only things to look at.

If you know what career you want or what degree / further academic study you want to move onto, check if there are any subject specific requirements before deciding.

If you are considering university, you will want to choose subjects that give you the best chance of success so think about subject combinations and how they complement each other.

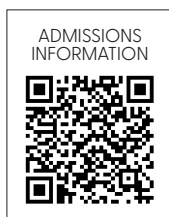
If you are not sure what your next steps will be, think about the subjects that you enjoy and those that you do well in. By keeping your choices broad, you keep your options open.

Take time to consider what type of assessment suits your learning style; do you do well in timed exams or do you do better when you are assessed through coursework? Will A Levels or BTECs best suit your style?

Most Carmel students follow a Level 3 Programme, studying three A Levels (or equivalent) and the timetable is extremely flexible giving you many different course combination possibilities.

Your personal study programme will help you prepare for your next step whether that be university, an apprenticeship, further training or employment.

Remember, this is all about you and your experience at Carmel. Any questions you have will be answered at your guidance interview and we will discuss subject specific entry requirements for your chosen study programme.



**Apply online by Wednesday 31st Jan 2024**



## ENTRY REQUIREMENTS

College entry requirements can be found on our website, along with subject specific requirements on the individual web pages.

You will be given specific entry requirements for your chosen study programme at your guidance interview.



# COURSES ON OFFER

## LEVEL 3 - A LEVELS / BTECs / T-LEVELS

### ART & DIGITAL

3D Design	28
Fashion & Textile Design	28
Fine Art	28
Graphic Design	28
Photography	28
UAL Creative Practice	29
Computer Science	29
BTEC Computing	29
BTEC IT	29
BTEC Performing Arts	29

### HUMANITIES

Classical Civilisation	33
Economics	33
Geography	33
History	33
Politics	33
Theology, Philosophy & Ethics	33

### MATHEMATICS

Mathematics	34
Further Maths	34
Statistics	34

### BUSINESS & SOCIAL STUDIES

Business Studies	30
Psychology	30
Sociology	30
Criminology (Level 3)	30
BTEC Business	30
BTEC Health & Social Care	31
BTEC Psychology	31

### SCIENCE & SPORT

Biology	35
Chemistry	35
Physics	35
PE	35
BTEC Applied Science	36
BTEC Engineering	36
BTEC Human Biology	36
BTEC Sport	36

### COMMUNICATION & CULTURE

English Language	31
English Lang & Lit	31
English Literature	31
Law	32
Film Studies	32
Media Studies	32
French	32
Spanish	32

### T-LEVELS

Education & Early Years	37
-------------------------	----

## FOUNDATION LEARNING

Entry Level	38	Level 1	38
-------------	----	---------	----

For students joining the Foundation Learning Department, please contact Head of Foundation Learning, Caroline Oates for further details on Entry Requirements.



# COURSES

## LEVEL 3 - A LEVELS / BTECs / T-LEVELS

### Art & Digital

#### A LEVEL 3D DESIGN

Explore a wide range of materials and processes to create 3 dimensional outcomes. This course involves:

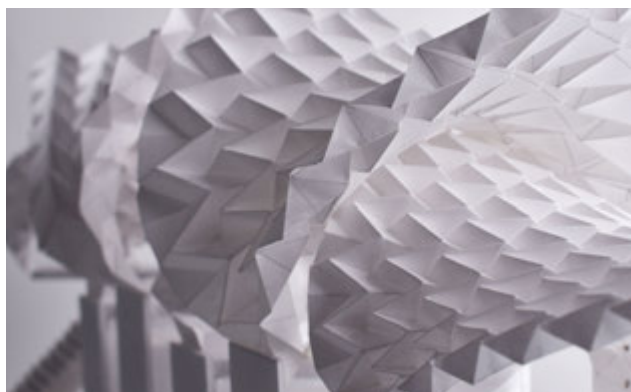
- The full design process, manipulating new materials, experimenting and problem solving
- Researching, recording and annotating from a wide variety of materials including paper, card, wood, metal, glass, plaster, clay and wire
- Creating outcomes including architectural, lighting, body adornment, sculpture, furniture, set design, product design and 3D design



#### A LEVEL FASHION AND TEXTILE DESIGN

Explore visual information to develop creative investigations into textiles and fashion. This course involves:

- Surface, texture, colour, materials and construction
- The design process, from initial inspiration to final realisation
- Experimenting with print, dye, stitch and constructed textiles
- Developing an understanding of professional contexts in fashion and interior design plus art textiles



#### A LEVEL FINE ART

The broadest of all the individual Art and Design specialisms, Fine Art covers a wide variety of artists, media and techniques. This course involves:

- Traditional and contemporary drawing, painting, printmaking, collage, sculpture, ceramics, photography and film
- Practical and theoretical workshops
- Creating ambitious artworks that reflect your interests, curiosities and passions
- Opportunities to get involved in competitions and exhibit your artwork in galleries and online



#### A LEVEL GRAPHIC DESIGN

Graphic Design is one of the biggest growth areas in the Creative Industries and covers all sorts of areas from animation and concept art, to branding and advertising, to fashion promotion and layout design. This course involves:

- Project-based assignments including packaging, creating a magazine, character design and music videos
- Exploring techniques including typography, printmaking, collage and illustration
- Using industry standard Adobe Cloud software



#### A LEVEL PHOTOGRAPHY

You will learn how to capture images across a number of fields of Photography including Fashion, Portraiture, Street Photography, Documentary, Sport, Fine Art and Studio. This course involves:

- Digital photography skills & techniques
- Digital editing including the use of Adobe Premiere, Photoshop and InDesign
- Traditional analogue and chemical based processes
- Video capture and editing, including Animation
- Studio lighting techniques
- Theoretical and contextual understanding



### LEVEL 3 UAL EXTENDED DIPLOMA IN CREATIVE PRACTICE: ART, DESIGN AND COMMUNICATION

This is a two-year, full-time Art and Design course equivalent to 3 A Levels. It is specifically designed for students who love their creative subjects and want a creative career. This course involves:

- Opportunities to specialise in your chosen area
- An in-depth introduction to the Creative Industries
- Developing knowledge, skills and attributes associated to the creative process
- Engagement with employers and companies through live briefs
- Workshops by industry professionals



### A LEVEL COMPUTER SCIENCE

An intensely creative subject that combines invention and excitement, looking at the natural world through a digital prism. You will gain technical knowledge and the ability to analyse and solve problems using computational thinking. This course involves:

- Understanding of how the computer works and what it can do
- Developing programming skills
- An introduction to the internal workings of the Central Processing Unit (CPU)
- How to develop software
- The legal and ethical issues associated with the use of computer systems



### BTEC COMPUTING

**Extended Certificate – Equivalent to 1 A Level**

Develop subject knowledge and skills in computer science and computer systems, enabling progression to further study at University or an apprenticeship. Units covered include:

- Principles of Computer Science
- Fundamentals of Computer Systems
- IT Systems Security and Encryption

Optional units include:

- Digital Graphics and Animation
- Games and Website Development
- Mobile Apps Development

You will also take part in a work placement in year two.



### BTEC INFORMATION TECHNOLOGY

**Extended Certificate – Equivalent to 1 A Level**

A two-year course leading to a qualification the equivalent of one A Level. The vocational nature of this course means that there is emphasis on developing practical skills in key areas of IT/Computing. This course involves:

- Information technology systems
- Creating systems to manage information
- Using social media in business
- Data Modelling

This course is assessed by coursework (47%) and exams (53%).



### BTEC PERFORMING ARTS (THEATRE)

**Extended Certificate – Equivalent to 1 A Level**

Develop performance, creative and communication skills through extensive practical work. You will deepen theoretical knowledge of drama through the ages to contemporary theatre. This course involves:

- Investigating the work of practitioners
- Developing skills and techniques for live performance
- Group Performance workshops
- Acting Styles



# Business & Social Sciences

## A LEVEL BUSINESS STUDIES

Learn the principles behind how to run your own company or manage effectively. You will develop key employability skills such as analysis, critical thinking and decision making. This course involves:

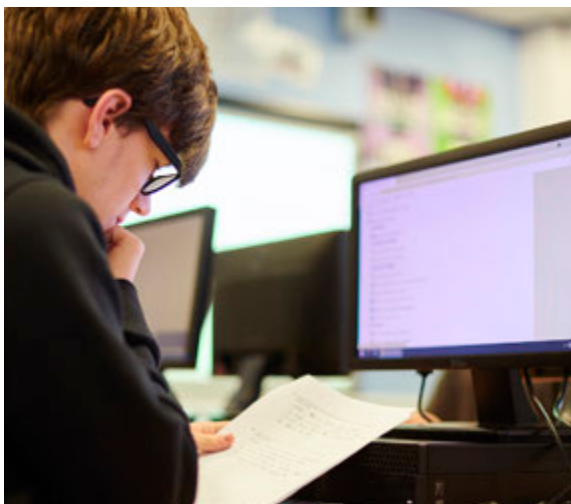
- Gaining knowledge of increasing profits, recruiting, managing employees, operations management, marketing topics
- The assessment of large multinational firms exploring financial strategies, competitive strategies, operational strategies, HR strategies



## A LEVEL PSYCHOLOGY

Psychology is the scientific study of behaviour and is primarily concerned with investigating what people do and why. It develops skills valued by universities and employers, including critical analysis, independent thinking and research. You will study:

- Social Influence
- Memory
- Attachment
- Research Methods
- Issues & Debates
- Approaches to Psychology
- Biopsychology
- Abnormal Psychology (Phobias, Depression and CD)
- Additional Options (Cognition and Development, Schizophrenia and Forensic Psychology)



## A LEVEL SOCIOLOGY

Explore key ideas, concepts, themes and practices. Are you interested in contemporary, modern Britain? Do you want to acquire knowledge and a critical understanding of the social world in which you live? This subject will broaden your understanding of the social and political world around you. You will study:

- Modules introducing socialisation, culture and identity (with a particular focus on youth subcultures)
- Research methods and social inequalities
- Globalisation and the digital world (with a particular focus on crime and deviance)

You will develop the necessary skills to enable you to assess different views and reach conclusions about society, based on a careful consideration of evidence.



## LEVEL 3 CRIMINOLOGY

### Applied Diploma

An exciting subject which incorporates aspects of Law, Sociology and Psychology, and will allow you to understand crime and deviance in detail. This course involves:

- Learning about the impact crime and criminal behaviour have on society
- Understanding different theories of crime
- Analysing real and contemporary case studies
- Studying the inner workings of the criminal justice system



## BTEC BUSINESS

### Extended Certificate – Equivalent to 1 A Level Diploma – Equivalent to 2 A Levels

Develop a real understanding of what is involved, both theoretically and practically, in becoming an effective business professional. This course involves:

- Units covering marketing, personal and business finance, event management, international business and principles of management
- Practical activities such as market research, team work and project management
- A work placement in year two
- 50% coursework and 50% exams





# Communication & Culture

## BTEC HEALTH & SOCIAL CARE

**Extended Certificate – Equivalent to 1 A Level  
Diploma – Equivalent to 2 A Levels**

A excellent choice for a career in Health, Social Care, Community Justice or Early Years sectors. Topics are assessed by both exams and coursework. You will also take part in a work experience placement. You will study:

- Working in Health and Social Care
- Enquiries into Current Research in Health and Social Care
- Meeting Individual Care and Support Needs
- Principles of Safe Practice in Health and Social Care
- Promoting Public Health
- Psychological Perspectives
- Health Psychology
- Assessing Children’s Development Support Needs
- Nutritional Health



## BTEC PSYCHOLOGY

**Extended Certificate – Equivalent to 1 A Level**

Psychology is the scientific study of the human mind and behavior. You will learn how Psychology is used to explain aggressive behaviours and gender differences. This course involves:

- Psychological Approaches and Applications
- Conducting Psychological Research
- Health Psychology
- Optional Module – An introduction to Psychopathology

Assessment is 60% examinations, 40% coursework



## A LEVEL ENGLISH LANGUAGE

A popular A level appealing to students because it examines texts in the real world such as adverts, newspaper articles and social media platforms. This course involves:

- How & why language is used in specific ways (audience, purpose & attitudes)
- Learning new terminology to help you write analytically and concisely
- Language of speech
- Language Change
- English in the twenty first century
- Language Investigation: coursework on Gender or Culture. You have the freedom to choose your own data.



## A LEVEL ENGLISH LITERATURE

English Literature appeals to students who are passionate about reading, debating and interpreting texts from a range of historical periods. This course involves:

- Critical appreciation of literary texts, demonstrating close analysis of poetry, prose and drama through cogent, detailed essays
- Poetry written in the Victorian and modern age; Renaissance and twentieth century drama
- A substantial study of two novels post and pre-2000 (Coursework investigation)
- Extracts from works by Hardy, Wilde, Chopin and Conrad for the unseen exam component



## A LEVEL ENGLISH LANGUAGE & LITERATURE

This course links the skills of both English Language and English Literature study appealing to students who have enjoyed both aspects at GCSE. This course involves:

- Exploring how ‘voice’ is crafted in both speech and writing
- Studying drama text and short literary, non-literary and digital texts
- Exploring ways in which writers use language techniques and literary devices
- Developing skills as a writer by producing fiction and non-fiction text in response to a topic area





### A LEVEL MEDIA STUDIES

An interesting course that will inform, enthuse and illuminate! You will enhance your understanding and appreciation of the media and its role in your daily life. This course involves:

- The role of the media both historically and currently in society, culture, politics and the economy
- The changing relationships between media forms, products, media industries and audiences
- Applying theory and subject specific terminology to analyse and compare media products
- Creating your own practical media productions in print/e-media/audio visual forms



### A LEVEL LAW

Explore the relationship between Law, Society and the Individual studying both the theory and application of Criminal Law. You will become an independent learner developing analytical, problem solving and communication skills. This course involves:

- The English legal system
- The role that legal personnel and lay people have in the law
- The theory and application of criminal law
- Tort law
- The law of contract



### A LEVEL FRENCH

This highly respected course will allow you to continue building on the skills and knowledge acquired at GCSE. You will benefit from fantastic language facilities and support from our friendly, native speakers. This course involves:

- Studying different aspects of French society and culture
- Analysing text and films as part of the written exam
- Carrying out a research project to discuss in the speaking exam
- Attending weekly conversation classes



### A LEVEL FILM STUDIES

An introduction to a wide variety of films to broaden your knowledge and understanding. It will appeal to those who are not only interested in watching films, but also in analysing them. This course involves:

- Learning about the film industry and developing your own film-related skills
- Studying documentaries, film from the Silent Era, experimental film and short film
- Film practices from a historical, national and global context
- Film as an 'art' form
- Theories of film consumption and production



### A LEVEL SPANISH

You will continue to develop the skills acquired at GCSE, practising listening, reading, writing and speaking in Spanish at a higher level. You will study a range of interesting topics focusing on the culture of Spain and Latin America. This course involves:

- Studying topics covering different aspects of Spanish society and culture
- Analysing text and films as part of the written exam
- A research project on an aspect of Hispanic culture to discuss in the speaking exam
- Weekly conversation classes





# Humanities

## A LEVEL CLASSICAL CIVILISATION

Develop an independent critical approach to literature, history, culture and politics. You will study:

- The ancient Greeks and Romans, with their unique composition and exciting tales of gods and heroes, Homer's Iliad and Virgil's Aeneid
- The drama produced in 5th century Athens which forms an excellent grounding for exploration of the classical world

You will develop sought after research and critical analysis skills through the interpretation of classical texts. This subject complements History, English Literature, Politics, Theology, Philosophy & Ethics and Art subjects.



## A LEVEL ECONOMICS

Economics is the study of scarce resources and how those resources are allocated to various uses in a country. This course involves:

- Developing your understanding of both economic and political concepts, theories and issues
- Critically evaluating national and global events and decisions that impact your life
- The study of Micro, Macro and Global Economics



## A LEVEL GEOGRAPHY

Find out how and why the world we live in is changing and develop a balanced understanding of both physical & human environments. This course involves:

- Dynamic Landscapes – 'Tectonic Processes & Hazards' and 'Coastal Landscape & Change'
- Dynamic Places – 'Globalisation' and 'Regenerating Places'
- Physical Systems & Sustainability: 'The Water Cycle & Water Insecurity', 'The Carbon Cycle & Energy Security' and 'Climate Change Futures'
- Human Systems & Geopolitics: 'Superpowers' and 'Migration, Identity & Sovereignty'
- Coursework: A 4000-word 'Independent Investigation' report, based on 4 days fieldwork, utilising both quantitative and qualitative data



## A LEVEL HISTORY

A very versatile subject, developing skills that are highly sought after in all careers such as research skills, analysis, critical thinking. History is not just an account of the past but an investigation of why things happened the way they did. If you have an enquiring mind and enjoy argument this is the subject for you! You will study:

- Britain 1930-1997, Enquiry Topic – Churchill 1930-1951
- Italian Unification 1789-1896
- Civil rights in the USA 1865-1992
- British Foreign Policy 1945 – 2003 (4,500-word essay)



## A LEVEL POLITICS

Politics is one of the most interesting and engaging qualifications you can choose. It is lively, relevant and controversial, covering news and current affairs from the UK and the US. You will develop research, written communication and debate skills. This course involves:

- Politics of the UK and the USA
- Comparative politics and political ideas
- Opportunities for trips, competitions and talks



## A LEVEL THEOLOGY, PHILOSOPHY & ETHICS

Explore key ideas, concepts, themes and practices whilst developing the ability to think critically and creatively. Learn how to conduct effective research and develop skills in analysis and argument. This course involves:

**Philosophy of Religion** – Ancient Greek philosophers, Plato and Aristotle, arguments for the existence of God, challenges to religious belief, and claims to religious experience

**Ethics** – moral decision-making, the nature of ethical language, and applied issues including euthanasia and business ethics

**Christianity** – The existence of God, death and afterlife, gender and theology, and the challenge of secularism



# Mathematics

## A LEVEL MATHEMATICS

A Level Mathematics prepares you for further study in a wide range of disciplines involving the use of Maths. This is a highly regarded A Level which will impress any future employer. This course involves:

- Building on what you learnt at GCSE level (number, algebra, graphs, trigonometry)
- An introduction to calculus and its applications
- How mathematical ideas are interconnected
- Making sense of data to understand the physical world
- Problem solving in a variety of contexts



## A LEVEL FURTHER MATHEMATICS

If you get grade 7 or above in GCSE Maths, you should seriously consider studying Further Maths. It is designed for students with an enthusiasm for Maths. Further Maths is very beneficial if you are considering a Maths or Engineering based degree and also if you are applying to a competitive university. This course involves:

- Building on algebra and calculus introduced in A Level Maths
- An introduction to complex numbers and matrices
- Fundamental mathematical ideas with wide applications in Mathematics, Engineering, Physical Sciences and Computing



## A LEVEL STATISTICS

A Level Statistics is not only an application of Mathematics but is a growing field of study in its own right. Statistics is now used so widely that many employers would see a qualification in Statistics as a huge advantage. This course involves:

- Building on the statistics and probability components of GCSE Maths
- Making sense of data trends and solve statistical problems
- Data analysis, probability, data distributions and hypothesis testing
- Preparation for further study/employment which uses statistical analysis and reasoning



# Science & Sport

## A LEVEL BIOLOGY

Learn about a wide variety of fundamental biological principles from cellular biology, biochemistry and genetics to big concepts including energy transfers through ecosystems, nervous communication and other systems in our bodies. This course involves:

### YEAR 1

- Biological molecules
- Cells including structures, function and processes
- Mammalian transport, exchange and digestion
- Natural selection and impact

### YEAR 2

- Nervous communication and muscles
- Homeostatic control of blood glucose and water potential
- Energy systems (photosynthesis and respiration)
- Inheritance of genetics
- Modern DNA technologies

Their applications in modern scientific research are emphasised.



## A LEVEL CHEMISTRY

Our committed tutors will help you achieve the highest grade possible. You will take part in regular practical sessions help to develop your lab techniques and evaluative skills. You will study:

- Inorganic and Physical Chemistry - calculating the PH of solutions and how storage & fuel cells work
- Organic Chemistry - how to synthesise organic modules and the study of their functional groups and how they react
- Analytical Chemistry - how chemists use infra-red spectroscopy to work out what functional groups are in the molecules



## A LEVEL PHYSICS

Appreciate the workings of the Universe through studying the smallest to the largest phenomena. Aim for top grades through our Physics High Achievers+ Programme. You will have the opportunity to build model telescopes, engines, bridges, rockets and robotic arms in our 'Tomorrow's Engineers' Programme. This course involves:

- Measurements and their errors
- Particle Physics
- Quantum Physics
- Waves
- Mechanics and materials
- Electricity
- Further mechanics and thermal physics
- Magnetic Fields
- Electric Fields
- Gravitational Fields
- Nuclear physics
- Astrophysics



## A LEVEL PHYSICAL EDUCATION

Develop knowledge of scientific, socio-cultural and practical aspects of PE. You will develop an understanding of the physiological/psychological states that affect performance and take part in practical workshops, gaining insights from industry experts. This course involves:

- **Anatomy and Physiology** – Exercise physiology / biomechanics in sport
- **Sports Psychology** – How performers learn skills in sport / mental preparation for sport
- **Socio-cultural Studies** – Values in sport / ethical issues related to drugs use and violence
- **Performance** - Practical assessment of your skills as a performer or coach / EAPI

Regular involvement in competitive sport is required to study A Level PE for one sport on the prescribed content list found on our website.



## BTEC APPLIED SCIENCE

**Extended Certificate – Equivalent to 1 A Level**  
**Diploma – Equivalent to 2 A Levels**

This practical science course leads to nationally recognised qualifications. You can choose either the National Extended Certificate equal to 1 A Level or the National Diploma equal to 2 A Levels. It covers all three sciences of Biology, Physics and Chemistry but in an 'applied' context. This course involves:

- Principles and Applications of Science
- Practical Scientific Procedures and Techniques
- Science Investigation Skills
- Physiology of Human Body Systems

Assessment is through a combination of internally assessed assignments and external examinations.



## BTEC APPLIED HUMAN BIOLOGY

**Extended Certificate – Equivalent to 1 A Level**

This nationally recognised qualification is equivalent to 1 A Level. You will learn how to carry out your own investigations using a variety of tests and techniques and develop skills useful for further education and the workplace. This course involves:

- Principles of Applied Human Biology
- Practical Microbiology and Infectious Diseases
- Human Biology and Health Issues
- Functional Physiology

You will complete a range of written reports, projects, practical assessments and presentations.



## BTEC ENGINEERING

A two year course leading to a qualification equivalent to one A Level. You will develop core engineering skills and learn how to apply scientific principles to transform ideas and materials into products and systems safely. You will also research and discover engineering practices used in industry and learn how to use professional engineering tools and CAD software. You will study:

- Unit 1: Engineering Principles
- Unit 2: Delivering of Engineering Processes safely
- Unit 3: Engineering Product Design and Manufacture
- Unit 10: Computer Aided Design in Engineering



## BTEC SPORT

**Extended Certificate – Equivalent to 1 A Level**  
**Diploma – Equivalent to 2 A Levels**

A vocational course providing you with an in-depth knowledge and understanding of sport. You can choose either the Extended Certificate (equivalent to one A Level) or the Diploma (equivalent to two A Levels). This course involves:

- Anatomy and Physiology
- Fitness Training & Programming for Health, Sport & Well-being
- Professional Development in the Sports Industry
- Application of Fitness Testing

**For the Diploma (all of the above plus):**

- Sports Leadership
- Skills Acquisition in Sport
- Investigating Business in Sport and the Active Leisure Industry
- Sport Injury Management
- Technical and Tactical Demands of Sport



“HIGHLY COMMITTED, SKILLED AND  
ENTHUSIASTIC TEACHERS INSPIRE  
AND MOTIVATE STUDENTS TO  
ACHIEVE THEIR VERY BEST.”

OFSTED 2019



# T-LEVELS

THE NEXT LEVEL QUALIFICATION

## NEXT LEVEL SKILLS FOR NEXT LEVEL JOBS

Learn more at [www.tlevels.gov.uk](http://www.tlevels.gov.uk)

### WHAT ARE T-LEVEL QUALIFICATIONS?

- Post-16, two-year course, equivalent to 3 A Levels
- Includes 45 day 'on-the-job' industry placement
- Developed in collaboration with employers and businesses so that the content meets the needs of industry and prepares students for the world of work, further training or study.

You will spend 80% of your time learning in the classroom and 20% on placement to develop the skills and knowledge employers are looking for.

### MORE ABOUT INDUSTRY PLACEMENTS

Every T-Level includes an industry placement with an employer focused on developing the practical and technical skills required for the occupation. These will last a minimum of 315 hours (approximately 45 days) but can last longer. Employers can offer industry placements as a block, day release or a mix of these.

### HOW ARE T-LEVELS ASSESSED?

Each course will be assessed differently depending on the key skills and behaviours you will need to develop for your chosen career path and could include the following:

- Written examinations
- Assignments
- Practical skills tests
- Employer-set practical project
- Group work
- Portfolios

### HOW ARE T-LEVELS GRADED?

On completion, you can achieve an overall grade of Pass, Merit, Distinction or Distinction\* with a separate grade for the core component, using A\*-E.

Your T-Level certificate will also include:

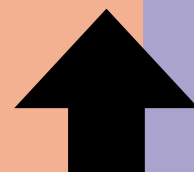
- a separate grade for the occupational specialism, shown as Pass, Merit or Distinction
- grades for Maths and English qualifications (if required)
- completion of industry placement

Learners who do not pass all elements of their T-Level will get a T-Level statement of achievement which will show the elements they have completed.

### WHAT CAN I DO WITH A T-LEVEL QUALIFICATION?

T-Level qualifications will support students onto a range of progression routes including employment, higher and degree level apprenticeships, higher education or higher level technical qualification.

↑ **MINIMUM**  
**45 DAY**  
↑ **INDUSTRY**  
**PLACEMENT**



### FOR SEPTEMBER 2024 WE WILL OFFER THE FOLLOWING T LEVEL...

#### EDUCATION & EARLY YEARS

This course will allow you to develop your knowledge across topics such as child development, safeguarding and special educational needs, as well as learning about the role of families and support agencies. These topics allow you to delve into the specifics of social interaction, how language is acquired and understanding behaviour.

You will complete one occupational specialism, either Early Years Educator or Assisting Teaching. You will focus on relationship building and promoting play, development

and early education, as well as becoming a collaborative and reflective practitioner.

If you choose the Early Years Educator specialism, this will enable you to enter the workplace as a qualified Level 3 Early Years Educator. Other progression options include studying degrees such as Early Childhood / Education Studies, Early Years, Primary and Secondary Teaching.



# FOUNDATION LEARNING

## ENTRY LEVEL / LEVEL ONE

Small opportunities are often the beginning of great achievements.

### ENTRY LEVEL FOUNDATION LEARNING

The course is suitable for students with moderate learning difficulties who are working at Entry Level 1 through to Entry 3. Personalised learning programmes cover three main areas:

**Employability Skills:** Develops life skills and skills around the world of work.

**Personal and Social Development:** Develops skills and knowledge around personal and social needs, for example Healthy Living, Travel Training and Social Awareness.

**Functional Skills:** The curriculum is designed to embed the necessary level of English and Maths skills. They are a key component of the Foundation Learning Entry Level programme.



### LEVEL ONE FOUNDATION LEARNING

The course is a personalised learning programme that covers the following areas:

**Vocational Studies:** Explores attitudes and behaviours needed to be effective in the work place. Linked to this area will be a work experience programme.

**Work Experience:** This will enable learners to undertake a realistic placement with local employers.

**Functional Skills:** The curriculum is designed to embed the necessary level of English and Maths skills needed in today's society and workplace.

**Personal and Social Development:** Develops skills and knowledge around personal and social needs, for example Healthy Living, Target Setting and Social Awareness.



---

“WELL-PLANNED AND  
WELL-MANAGED INDIVIDUAL  
TRANSITION ARRANGEMENTS  
ENSURE THAT STUDENTS SETTLE IN  
VERY QUICKLY TO COLLEGE LIFE.”

---

OFSTED 2019

# LOOKING FOR DEGREE STUDY?

## DEGREE COURSES ON OFFER

**Providing quality degree courses for over 25 years**

**Small class sizes**

**Pastoral support from an assigned Academic Advisor**

### **University of Liverpool**

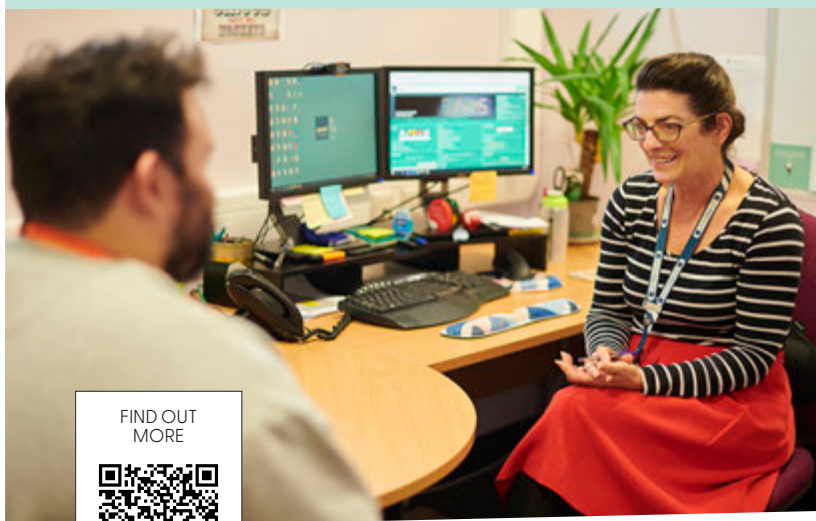
Biological Sciences\*  
Chemical Sciences\*  
Computer Sciences\*  
Dental Therapy\*  
Earth Sciences\*  
Engineering\*  
Geography\*  
Mathematical Sciences\*  
Medicine, Dentistry & Veterinary Science\*\*  
Physical Sciences\*  
Nursing & Allied Health Professions\*

### **University of the Arts London (One year specialist art course)**

UAL Foundation Art Diploma

\* Four Year Programme  
(Foundation Year delivered at Carmel College)

\*\* Six Year Programme  
(Foundation Year delivered at Carmel College)



FIND OUT MORE



Email [degree@carmel.ac.uk](mailto:degree@carmel.ac.uk)



**ual:**

**Apply online by Wednesday 31st Jan 2024**



We hope this prospectus has given you a flavour of what Carmel has to offer. If you have any questions, do not hesitate to contact us, or come to one of our Open Events and see for yourself what makes Carmel such an outstanding college.

## OPEN EVENTS

**Come along and see our fantastic facilities.**

**WED 11 OCT 2023** 5:00-7:30pm

**THURS 9 NOV 2023** 5:00-7:30pm

**TUES 12 MAR 2024** 5:00-7:30pm

The information in this Prospectus is correct at the time of printing but is subject to change. Please check [www.carmel.ac.uk](http://www.carmel.ac.uk) for any updates.

Prescot Road, St Helens,  
Merseyside WA10 3AG

**Tel:** 01744 452200 (Reception)

01744 452214 (Admissions)

**Email:** [info@carmel.ac.uk](mailto:info@carmel.ac.uk)

**carmel**  
college

**Ofsted**  
Outstanding  
Provider