



# TRAVELLING TO CARMEL COLLEGE

## TICKETS AND TRAVEL PASSES

Depending on how you choose to travel to Carmel College and where you live, there are different types of passes or tickets available for you to buy.



**solo** **trio** **railpass**

### Merseytravel's Tickets for Young People

Most popular with students are Merseytravel's SOLO (Buses), RAILPASS (Trains) or TRIO (Buses, Trains and Ferries) tickets. Term Time Only (TTO) tickets are the preferred choice for students as they can be used on any public bus within the Merseyside boundaries and include the College's 700 series. Students who live in the Ashton-in-Makerfield area and wish to use the 745 College Service, can purchase a TTO Ticket to use solely on this service (as agreed with Merseytravel). TTO tickets are valid Monday to Friday up to 8pm.

Price per term for Solo passes for 2016/17

One Area - \*£81.90  
All Areas - \*£121.55  
\*(subject to change)



### MyTicket

MyTicket is available for young people aged 5 – 18 and is a one day ticket that you can purchase on board the bus for *just £2 per day* for use at any time, as many times as you like, on any participating bus service within the Merseyside and Halton areas.



To view a copy of Merseytravel's Tickets for Young People leaflet, or for further information and current prices visit [www.merseytravel.gov.uk](http://www.merseytravel.gov.uk)  
A paper copy of the leaflet is available from College, Merseytravel Centres, Railway Stations and Main Post Offices.



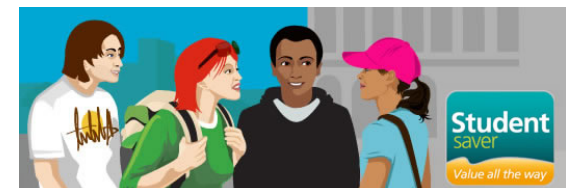
**Arriva Student Saver Ticket** – unlimited travel 7 days a week on all Arriva bus services throughout the North West (not valid on night buses). These tickets can be purchased termly from the College. **You will need to bring a passport sized photograph with you.** The term dates are tailored to the College's term dates. For further information please visit [www.arrivabus.co.uk](http://www.arrivabus.co.uk)

Arriva Pass prices for 2016/17:

(payable termly via Parentmail PMX on-line services)

Term 1 - \*£143  
Term 2 - \*£117  
Term 3 - \*£109  
\*(subject to change)

Please note: A fee of £25 is charged by Arriva for a lost/replacement pass.



# TRAVELLING FROM WARRINGTON OR WIDNES

(Bus services contracted and subsidised by the College)

Students who choose to use the College services from the Warrington or Widnes areas will be asked to complete an Application Form to purchase a Travel Pass from the College. Public buses run from these areas also.

- ❖ The Application Form and information is posted to students' home addresses
- ❖ To secure a place on the College transport, Application Forms should be completed and returned to College as soon as possible
- ❖ Travel passes are issued on an annual basis
- ❖ Once payment is confirmed, your Travel Pass will be produced and notification will be given via Connect to collect your pass from Student Services
- ❖ Students in financial hardship may be eligible to apply for the 16-19 Bursary Fund. Please see the College website for application details and guidance on eligibility

## *Travelling from Warrington*

Cost of annual Travel Pass \*£375 (which equates to £1.02 per journey)

## *Travelling from Widnes*

Cost of annual Travel Pass \*£425 (which equates to £1.15 per journey)

\*(subject to change)

For details of a specific route, please visit the Student Transport page on the College website [www.carmel.ac.uk](http://www.carmel.ac.uk) and download our Travelling to Carmel College document.

