

# BTEC HEALTH & SOCIAL CARE

COURSE GUIDE 2018

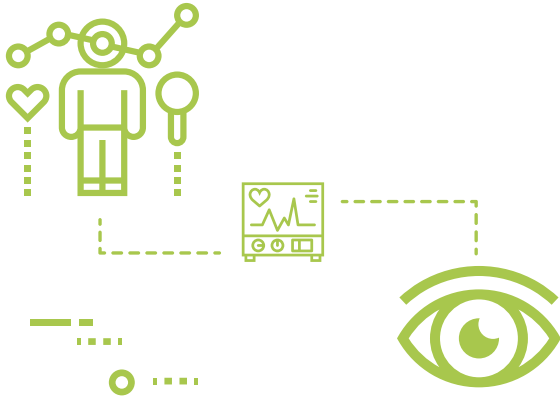


The best preparation for tomorrow is  
doing your best today.

CARL FRIEDRICH GAUSS

# HEALTH AND SOCIAL CARE

BTEC Nationals  
Exam Board PEARSON

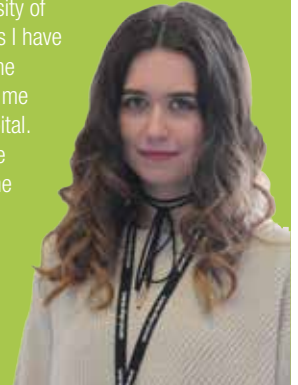


## OUR STUDENTS SAY...

*So far Carmel has been a great experience and this is due to the support I have received from the tutors and peers.*

I have quickly made new friends that I never would have met if it wasn't for Carmel. The best thing about Carmel is the atmosphere which has been welcoming from the start. BTEC Health and Social Care is one subject I would definitely recommend to you because this subject opens up many doors in all health and social care sectors. I have been on a work placement at Whiston Hospital which is an opportunity I will never forget. I want to go to the University of Manchester once I have left and I will be taking the skills I have learnt from this course with me. I would like to go into the NHS after university and I feel like it is the right path for me due to the work experience I have already had in a hospital. If you are the person who is willing to work, then you are guaranteed to get the best results on this course with the help of Carmel College.

**Jessica Maudsley** St Cuthbert's  
Studying - BTEC Health & Social Care (Double),  
BTEC Applied Science



## About the BTEC National qualifications

The Health, Social Care, Community Justice and Early Years Sectors offer a variety of rewarding careers. With a national shortage of qualified professionals, there could be no better time to work in the care industry.

The new BTEC Nationals in Health and Social Care provide the knowledge and employability skills students need to succeed at higher level study and in their chosen career. Students who have experience of research, extended writing and meeting deadlines will be well prepared for Higher Education.

Over 5,000 employers, universities, teaching professionals and trainers have been involved in developing this new range of BTEC Nationals. They provide progression to study at a higher level or direct progression into the workplace. YouGov research, shows that 62% of large companies have recruited employees with BTEC qualifications. What's more, well over 100,000 BTEC students apply to university every year and their BTEC Nationals are accepted by over 150 UK universities and Higher Education institutions for relevant degree programmes. Universities, professional bodies and businesses have provided letters of support confirming that these qualifications meet their entry requirements.

You will have the opportunity to study the course as a single qualification which is equivalent to half an A Level (Certificate), one A Level (Extended Certificate) or as a double award qualification which is equivalent to two A Levels (Diploma).

The range of new BTEC National qualifications in Health and Social Care each have a clear purpose, so there is something to suit each learner's choice of study programme and progression plans. These courses combine well with a wide range of A Level subjects and use a combination of assessment styles. The range of assessment styles gives students confidence so they can apply their knowledge to succeed in the workplace and have the study skills to continue learning on Higher Education courses and throughout their career.



Trip to Heald Farm Court

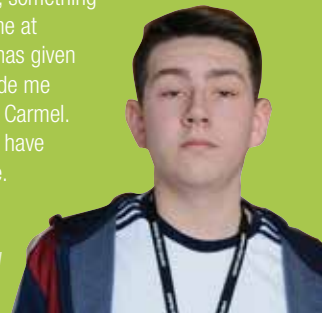


## OUR STUDENTS SAY...

*I enjoy Carmel for many reasons, however for me the main reason has to be the freedom you get when coming here.*

You are treated like an adult and respected well by teachers and students no matter what. Initially, I didn't choose BTEC Health and Social Care, however, I soon realised the previous course I had chosen wasn't right for me and I joined my BTEC Health and Social class a few weeks after the new term began, it was the best thing I did. I am the only boy in the class, which was daunting initially but from the offset I was welcomed into the group. Prospective students may think that BTEC Health and Social is a subject for girls but it's not that way at all. I love the fact that this subject is very varied, including subjects like Biology and Sociology, something I wasn't expecting prior to the course. During my time at Carmel I have taken part in work experience which has given me a real incite into a working environment and made me realise the options and potential for me once I leave Carmel. In the next few years, I hope to use the many skills I have gained to help me move onto the next chapter in life.

**Josh Wareing** St Augustine's  
Studying - BTEC Health & Social Care (Double), History



## What will I study?

Some of the units you may study are:

- Human Lifespan Development
- Working in Health and Social Care
- Anatomy and Physiology for Health and Social Care
- Enquiries into Current Research in Health and Social Care
- Meeting Individual Care and Support Needs
- Work Experience in Health and Social Care
- Principles of Safe Practice in Health and Social Care
- Promoting Public Health
- Sociological Perspectives
- Psychological Perspectives
- Complementary Therapies for Health and Social Care
- Health Psychology
- Assessing Children's Development Support Needs
- Nutritional Health

## How will I be assessed?

Assessment is specifically designed to fit the purpose and objective of the BTEC National Qualifications. It includes a range of assessment types and styles. The three main forms of assessment that you need to be aware of are: external, internal and synoptic.

### External Assessment

Each external assessment for is linked to a specific unit of study. All of the units developed for external assessment allow you to demonstrate breadth and depth of achievement. Each assessment is taken under specified conditions, then marked by Pearson and a grade awarded. Students must achieve all external units at pass grade or above.

The styles of external assessment used for qualifications in the Health and Social Care suite are:

- **Examinations** – all students take the same assessment at the same time, normally with a written outcome
- **Set tasks** – students take the assessment during a defined window and demonstrate understanding through completion of a vocational task. Some external assessments include a period of preparation using set information.

### Internal Assessment

Internally-assessed units are assessed through assignments. This ensures that you are assessed using a variety of styles to help you develop a broad range of transferable skills. You could be given opportunities to:

- Write up the findings of your own research
- Use case studies to explore complex or unfamiliar situations
- Carry out projects for which you have choice over the direction and outcomes
- Demonstrate practical and technical skills using appropriate work-based values and practices.

### Synoptic Assessment

Synoptic assessment requires you to demonstrate that you can identify and use effectively, in an integrated way, an appropriate selection of skills, techniques, concepts, theories and knowledge relevant to a key task. These tasks provide opportunities for deep learning where you are able to make connections among units and select areas of interest for detailed study and apply your learning in realistic contexts using scenarios and realistic activities. Synoptic units may be internally or externally assessed.

### Work Experience

On your course you will undertake work experience. This is a good way to use the skills you have learnt in the classroom and see what work is really like. You could do anything, from spending time with a childcare agency or primary school, to working with a health practitioner - perhaps an occupational therapist or nutritionist.

## OUR STUDENTS SAY...

*Carmel has given me so many opportunities both academically and personally. If it wasn't for Carmel and all of the help provided, I would not be as confident as I am at this moment when it comes to my studies.*

Studying BTEC Health and Social Care has given me a deeper understanding of how all sectors of health and social care work. I have also been given the opportunity to complete work placements at Carmel as part of my course. I have worked at the St Helens YMCA and I am currently working in Legh Vale Primary School in year 1. Both of these placements have given me the opportunity to use new skills and knowledge in a working environment. Once I have completed my time at Carmel I hope to go to Edge Hill University to study Children's Nursing.

**Chloe McCulley**  
Byrchall High School  
Studying - BTEC Health & Social Care (Double),  
GCSE Maths



## Frequently Asked Questions

### What are the entry requirements for this course?

You will need grades **CC in Health & Social Care** (if studied) **OR a Pass in BTEC Health & Social Care** (if studied) **AND GCSE grade 4 in Maths, English Language and Science/Biology.**

### What support will I receive?

Our Health and Social Care department is committed to supporting you as an individual and helping you to achieve your full potential. Teachers can help you to reflect on your achievement and guide you in the setting of targets to improve your performance throughout the year. Support tutorials are provided on a one-to-one and small group basis and you will be given help with a range of study skills for example, organising your time, independent research, revision skills etc.

### How do these qualifications provide transferable knowledge and skills for Higher Education?

These qualifications provide transferable knowledge and skills that prepare you for progression to university. The transferable skills that universities value include:

- The ability to learn independently
- The ability to research actively and methodically
- Being able to give presentations and be active group members
- Reading technical texts
- Effective writing skills
- Analytical skills
- Preparation for assessment methods used in degrees.



### How do these qualifications provide employability skills?

There are opportunities in lessons to give you practice in developing employability skills in the following three main categories:

- Cognitive and problem-solving skills: use critical thinking, approach non-routine problems applying expert and creative solutions, use systems and technology
- Interpersonal skills: communicating, working collaboratively, negotiating and influencing, self-presentation
- Intrapersonal skills: self-management, adaptability and resilience, self-monitoring and development.

### How successful are Carmel's students?

We are incredibly proud of the fantastic grades achieved by students studying with us. In 2017 88% of students who completed the Diploma achieved Distinction\* - Distinction grades and 100% achieved Distinction\* - Merit grades.

## Meet the Tutors

Pam Maggs  
Head of Department

Ann Hodson  
Subject Tutor

Tracey Coster  
Subject Tutor

**carmel**  
college

Prescot Road, St Helens  
Merseyside WA10 3AG  
[www.carmel.ac.uk](http://www.carmel.ac.uk)

## More Information

Exam board website: [www.qualifications.pearson.com](http://www.qualifications.pearson.com)  
[www.connexions-direct.com](http://www.connexions-direct.com)